

OFFICE OF INTERCULTURAL STUDENT ENGAGEMENT
OFFICE OF INTERNATIONAL STUDENT SERVICES

ANNUAL
'14-'15 **REPORT**



*The secret of change is to focus all of your energy,
not on fighting the old,
but on building the new.*

- SOCRATES

CONTENTS

MISSION + VISION	1
FROM THE DIRECTOR	2
A YEAR IN REVIEW	3
HISTORY TIMELINE	4
STAFF	5
PROGRAMS + CAMPUS ENGAGEMENT	11
SERVICE + OUTREACH	15
PROJECT THRIVE	17
MLK SERIES	21
CHILDREN'S DEFENSE FUND	23
EWING	25
FACTS	26

MISSION + VISION

We believe in the power of art and design to unleash our inherent curiosity, constantly broadening and reshaping our understanding of the human experience. We envision an artistic community where the breadth of the human dignity is creatively realized, inspiring everyone to collectively and proactively develop their sense of individual potential and global mindfulness.

OFFICE OF INTERCULTURAL STUDENT ENGAGEMENT

We foster multicultural understanding and personalized support at RISD by engaging its community through programming, advocacy, and specialized services.

OFFICE OF INTERNATIONAL STUDENT SERVICES

As advocates for RISD's international community, we offer support and services with immigration compliance, cultural and language adjustment and navigating US systems.

FROM THE DIRECTOR

National events over the last year have further exposed the urgency for love, peace, honesty, courage, and forgiveness to be integral parts America's future. For without them, we will continue to reside in a holding pattern producing more racially laced fatalities like those in Ferguson, MO (Michael Brown), Baltimore, MD (Freddie Gray), and Charleston, SC (anti-racist church massacre).

Our office and RISD at large are committed to realizing a campus where artists consider world events, circumstances, and histories as they execute collective and individual opportunities to design new paradigms. As an artists' community, one of our questions should continually be, "What is our creative contribution toward furthering and ensuring human dignity?"

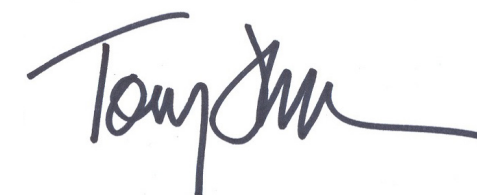
During the 2014-2015 academic year, ISE / OISS focused on key areas as a way of helping the RISD community and emerging artists answer that questions. We strengthened and aligned our student learning outcomes with our services and programs, increased our student advocacy efforts through focusing on vulnerable student populations, welcomed two new staff members holding expertise and passion in our departmental mission, and advanced our client services particularly in the areas of immigration systems and policies. We produced and co-sponsored 76 programs resulting in over 3,000 attendees. Our programs addressed transgender remembrance, Feminism, Ferguson, MO & "Black Lives Matter", Hindi acapella music, global spiritual and cultural traditions, and photo-narrative reflections on diversity. Toward skill development, our office produced workshops on art and activism, immigration compliance, leadership, professional etiquette, and cultural adjustment at RISD. Our sincere thanks go to our dedicated student cultural programmers who were instrumental in producing much of this year's program offerings. Lastly, we conducted 545 individual student appointment and advising sessions – a record number!

I am delighted that we have partnered with many areas of the RISD and local communities to achieve important campus progress – progress benefiting our entire campus. RISD's preferred name policy now fully supports our transgender and other student populations for whom the distinctions between birth and preferred names are understood and accommodated. Gender-neutral restrooms have achieved a victory in reducing the campus wide emphasis on the traditional gender binary while underscoring the benefits of universal design. Lastly, the emergence of staff and faculty groups examining data, support, and the success of incoming students has encouraged new conversations and adjustments in how we educate the needs and rich diversity of today's 21st century students.

In closing, I am honored to work with such a devoted team of professionals. Within the ISE / OISS team are individuals who are committed to inclusion and equity in public and private ways. Each is committed to working within RISD on committees related to advancing campus inclusion and equity. Additionally, they serve on regional and local boards committed to strengthening our representative industries, growing our professional practice, advancing equity, or building community partnerships.

As you read this 2014-15 Annual Report, I hope that you are encouraged by the range of work happening within the RISD community. Furthermore, I hope you are encouraged to partner with us in the work that is yet before us.

Humbly,



Tony Johnson

A YEAR IN REVIEW

OFFICE OF INTERNATIONAL STUDENT SERVICES

The Office of International Student Services (OISS) has had a year filled with transition, growth and reflection. Our office supports the 730 non-resident students on RISD's campus as well as anyone that considers themselves a member of the international community. This dynamic community continues to grow at RISD and it has given us a great opportunity to learn more about the transition that our students experience when they come to the United States to study.

During the 2014-2015 academic year, OISS focused on a few key areas that we thought would benefit the international population we work with. We looked at many of our office processes that the students use to navigate their immigration requirements and increased the efficiency of our systems. We also enhanced our Optional Practical Training workshops and the offerings that we provide. This allowed for students to engage with the workshops to more easily get the information they need to feel comfortable and confident with the application process. Finally, our International Orientation was more robust this past year and included more room for the international students and their parents and guardians to feel comfortable beginning the school year having the necessary tools to be successful at RISD.

In addition to some of our more systematic changes and enhancements, we partnered with RISD Dining, the Center for Student Involvement (CSI) and the student-run Global Initiative Club on the 2nd Annual Eat the World International Food Festival. Eat the World is an annual festival that offers up to 25 booths of different food from around the world that is prepared by the students and RISD Dining. There is also a range of musical acts and other cultural performances that showcase our international community from over 59 different countries! ISE and OISS also worked with our cultural programmers to produce the events of "You've Got Mail" and the "Vagina Monologues" that both were created with the intention of focusing on the international experience.

Our partnerships with other departments on campus for programming and for processes are integral pieces in the success of OISS. With our international population rapidly increasing, it has become even more important than ever. In addition to partnerships with other offices, OISS has increased its level of service with our full-time Student Customer Service Desk. Throughout the last year alone, the Service Desk assisted at least 1106 students in addition to answering numerous phone calls and emails. Without these phenomenal and dedicated students, we would not be able to offer the level of service that we do.

Finally, to echo Tony's sentiments, it is such a pleasure to work with a group of individuals that is so invested in creating an inclusive campus. The ISE / OISS team is continuously evaluating our systems, our programs and the RISD student experience to ensure that everyone feels welcome here.

I am looking forward to the year ahead and to continue working towards the betterment of RISD and its community.

Sincerely,



Kate Sacco

TIMELINE

1979

The Minority Affairs Office expands responsibilities and reports to the VP for Student Affairs.

1976

The Third World Program folds due to the resignation of the Dean.

1968

RISD initiates the Third World program with three positions: Dean - John Torres, Assistant Dean - Ann Souza, & a secretary. The program's mission focuses on disadvantaged students. Program responsibilities include: recruitment, admissions, evaluations and admittance in conjunction with Admission office, financial aid distribution, advising (on academic, personal, social, financial matters) and fundraising.

1977

The Minority Affairs Office is created as a one person office reporting to the Dean of Students. Dorothy Ford assumes this position as Secretary/Assistant to the Associate Dean of Students.

1992

The Minority Affairs Office becomes the office of Multicultural Affairs (OMA) and assumes responsibility for supporting and advising international minority and international student populations including immigration and Naturalization Service (NS) processing. The assistant title changes to Coordinator of Multicultural Affairs and reports to the Director of Student Development and Counseling Services. Office housed in College Building.

1999

The Office of International Programs is created to oversee international student populations and INS processes. OMA resumes responsibility for supporting and advising minority students.

2001

Resulting from the 1999 RISD Diversity Committee Report, OMA is upgraded to a department housed in Carr House with a position upgrade to Director. Mr. Deba Patniak becomes OMA's first Director.

2000

OMA Coordinator, Dorothy Ford, retires after 27 years of service to RISD and campus diversity.

2002

OMA moves to Ewing House. Catalyst Arts (an arts civic engagement program) formally joins RISD and operates out of OMA.

2004

Tony Johnson '93 SC becomes OMA's second Director.

2011

OMA is relocated to Carr House.

2006

RISD Multicultural Center and Multicultural Gallery are established in Ewing House. OMA and the Office of International Programs assume oversight and management for Ewing Multicultural Center.

2013

Diversity Coordinator position reframed as Assistant Director of Diversity Programs. Chris Lauth assumes this role.

2012

OMA is renamed the Office of Intercultural Student Engagement (ISE) and hires a diversity coordinator to oversee student support and campus education. ISE assumes oversight of the Office of International Student Services (OISS). Kate Sacco is named ISS Associate Director.

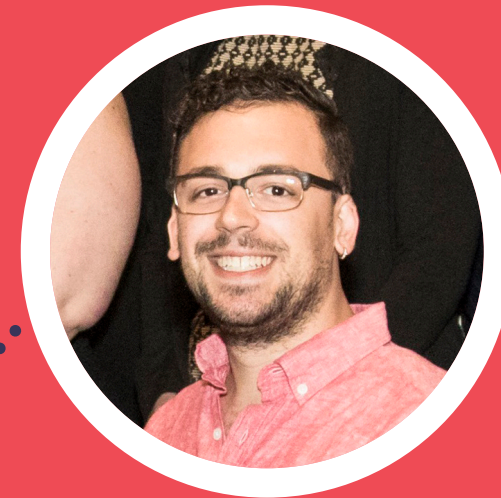
PROFESSIONAL STAFF

TONY JOHNSON

Director,
Office of Intercultural Student Engagement (ISE)

Tony Johnson is the Director of Intercultural Student Engagement at Rhode Island School of Design. In this role, he participates in constructing and implementing the college's efforts toward a multicultural and philosophically diverse environment that is respectful of all its members; Tony works to ensure a college campus that is enriched through experiencing and understanding society through strategic use of the range of cultures the college represents and building strong bridges to Rhode Island's greater community. Tony is a 1993 RISD Sculpture alumnus. Prior to his current role, he held a variety of professional development training for MetLife Insurance and serving as RISD's first admissions officer dedicated to diversity enrollment.

In addition to his work with art institutions, he is a board member of the Rhode Island Black Heritage Society, a juror on The Rhode Island Foundations' First Generation Scholarship Committee, and a member of the Multicultural Affairs Think Tank through the New England Resource Center for Higher Education (UMass/Boston).



CHRIS LAUTH

Assistant Director of Diversity Programs,
Office of Intercultural Student Engagement (ISE)

Christopher Lauth is the Assistant Director of Diversity Programs for the Office of Intercultural Student Engagement. In this role, he seeks to facilitate student success by providing support and outreach to RISD community members. An integral part of facilitating this success is working to provide a supportive, safe, welcoming and affirming environment of equal treatment and access for various communities including: lesbian, gay, bisexual, transgender and questioning (LGBTQ); racial/ethnic minority; religious; and first-to-college. Through support, advocacy and educational opportunities, Chris seeks to increase the college's awareness, understanding and competency among important multi-cultural issues. Chris has received his Bachelor's Degree from Flagler College (2009) in U.S. Southern Cultural History and his Master's from Canisius College (2012) in College Student Personnel Administration. Prior to his current role, he served as the GLBTQ Leadership Development Coordinator at Canisius College as well as the Founder and Executive Director of Club UNITY, Flagler College's Gay/Straight Alliance from 2007-2009.

EMMA MONTAGUE

Administrative Coordinator
Office of Intercultural Student Engagement (ISE)

Emma is the Administrative Coordinator, Intercultural Student Engagement (ISE) at the Rhode Island School of Design. She earned her Bachelor of Arts Degree in English Literature at Royal Holloway, University of London and a Master's degree in College Student Personnel from The University of Rhode Island. Emma's role in ISE is multifaceted, managing administrative tasks for both Intercultural Student Engagement and International Student Services, as well as supervising our talented pool of student staff. As a welcoming face in the main office, Emma is the first point of call for any issues and opportunities pertaining to Intercultural Student Engagement.

She is originally from London, England, but has also lived and worked in Illinois, California, Florida, Massachusetts and Rhode Island. Prior to joining our team, Emma worked at the School of the Art Institute of Chicago and is thrilled to join the community at RISD and continue to work closely with a community of artists.



KATE SACCO

Associate Director,
Office of International Student Services (OISS)

Kate is the Associate Director of the Office of International Student Services (OISS) within the OFFice of INtercultural Student Engagement at the Rhode Island School of Design. She holds a Bachelor's degree in Spanish from the University of Wisconsin - Eau Claire and a Master's Degree in Intercultural Relations from Lesley University. Kate's role in OISS is to assist the international student population with cultural adjustment and immigration compliance. With the Director, she also promotes positive cultural exchange experiences by creating opportunities for international students and domestic students to share their knowledge, language, culture and background within the United States, within Providence and within the RISD community. She is originally from Wisconsin, but has also lived, worked and traveled in range of places, including Massachusetts, Oregon, Rhode Island, Australia, China, Serbia and Mexico. Most of her work has been in the field of Intercultural Relations and she is involved in the professional organization, NAFSA: Association of International Educators. Prior to her current role, she has worked at Council on International Educational Exchange (CIEE) and ELS Language Centers.



Chris, Kate, Barbara, Emma, and Tony,
ISE/OISS Staff Retreat



Tony and Danny Glover
MLK Series 2015



Kate and students
International Orientation

BARBARA KLUESNER

International Student Advisor
Office of International Student Services (OISS)

Barbara is an International Student Advisor in the Office of International Student Services within Intercultural Student Engagement at the Rhode Island School of Design. She earned her Bachelor's degree in Sociology at the University of Wisconsin-LaCrosse and her Master's degree from the University of Massachusetts-Boston. Barbara advises international students with respect to immigration compliance and navigating cultural adjustment within the United States, Rhode Island and in the classroom at RISD. She is committed to providing the best possible assistance to international students in order to make their experience at RISD the best it can be. Barbara has worked in the field of International Education for the past seven years and is a member of NAFSA: Association of International Educators. Barbara hails from rural Wisconsin and, while in New England has been her home for many years, she is proud to call herself a cheesehead.



Kate, Emma, and Barbara
[re]DESIGN Thanksgiving

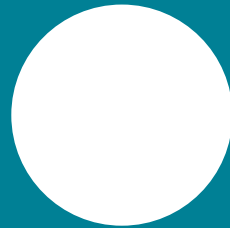


ISE and various Student Affairs Staff
Student Leadership Recognition Dinner

Julia Wright, TX



Yannik Stevens, SC



Sam Tesluk, ID

ISE PROJECT ASSISTANTS

STUDENT STAFF

ISE CULTURAL PROGRAMMERS

Emily Chao, ID



Diego Fernandez, AR



Indhu Solayappan, ID



Shivantika Jain, IL



Carlton Smith, AR

Michael Cooley, ID



Michelle Zhuang, IL



Young Eun (Angela) Kim, TX

Juila Choi, PT



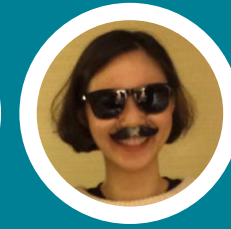
Margaux Milsom, FAV



Jae Hee Han, PT



Won Bee Hwang, IL



Christina Chang, PT

Adam Blake, AP



Kyu Li Kim, IntARCH



Boong Chamnanratanakul, GD



Marcus Lee, ARCH



Yeon Hak Ryoo, GD

OISS OFFICE ASSISTANTS



Kevin Kim, GD

WEB DESIGNER

PROGRAMS + COMMUNITY ENGAGEMENT

During the 2014 - 2015 academic year, over 3000 individuals attended / participated in educational and social programming. Below is a comprehensive list of programming. Included are also programs the office worked on collaboratively.

This year the office has been involved in the production of over 70 events, covering a diverse array of topics and catering to both the RISD Community and public.

SEPTEMBER

International Orientation (250)
Project Thrive: Meet N' Greet w/ Jamie Washington (16)
Project Thrive: Opening Reception (38)
Project Thrive: Fall Outing, Waterfire! (10)
ISE/OISS Student Staff Retreat (22)
"Searching for Diversity" Faculty Kick-Off Meeting
Cultural Community Survey Results Department Head Orientation
Project Thrive: Skill Development: Crit Talk (RISD 360) (25)

OCTOBER

Eat The World (200)
Project Thrive: Study Group #1: Starting College (14)
Project Thrive: Project Thrive Retreat, RISD Farm (3)
Project Thrive: Skill Development: Time Management (RISD 360) (10)
Project Thrive: Study Group #2: Cultural Adjustment (8)
Project Thrive: Skill Development: Budgeting & Financial Aid (RISD 360) (12)
Project Thrive: Skill Development: Class Registration Party (RISD 360) (12)

NOVEMBER

National Transgender Day of Remembrance: Wall of Hate (60)
ISE Student Staff Holiday Party (18)
Project Thrive: Study Group #3: Social Pressure & Work/Life Balance (14)
Project Thrive: Study Group #4: Professional Etiquette (7)
The FWord - Intersectional Feminism (30)

DECEMBER

Finals Destination: The Royal Treatment
Midnight Breakfast
Project Thrive: Study Group #5: Finals Preparation (2)
World AIDS Day (20)

JANUARY

Project Thrive: Study Group #6: Making the Most out of Winter Session (14)
Ferguson: Past, Present, Future - Community Panel & Discussion (100)
Ferguson: Past, Present, Future - Black Lives Matter: The Artist's Call (40)
Project Thrive: Ice Skating (19)
OPT Workshop (10)
MLK Opening Celebration Dinner & Concert (250)
Project Thrive: MLK Opening Ceremony (15)
MLK Day of Service (200)
RISD LEADS featuring Camilo Viveiros: Martin, Ella, and Cesar: Learning from Movement Leader (45)
Rhythm + Change: "The Black Power Mixtape, 1967-1975" Film Screening (25)
Rhythm + Change: "Trouble the Water" Film Screening (25)
Rhythm + Change: "Soundtrack for a Revolution" Film Screening and Faculty Panel Discussion (30)
Kindred Exhibition Luncheon w/ Danny Glover (25)
Danny Glover Dinner at the President's House (20)
Danny Glover MLK Keynote Address "Creativity and Democracy: Social Change through the Arts" (550)

FEBRUARY

OPT Workshop (37)
YouTubing For Change (80)
Jobs and Internships (30)
Immigration Lawyer Workshop (27)
Project Thrive: Closing Celebration (20)
You've got Mail (60)



Sept. 12 • 7-9PM
Ewing House • 41 Waterman
a bbq welcome to risd's lgbtq community
email qsa@risd.edu with any questions



Sponsored by OISS and ResLife

WE'LL TAKE YOU TO WRENTHAM OUTLET MALL!
WINNER!
CLIPPERS!

Saturday November 1st, 2014
Meet in front of 30 Waterman at 10:45am, bus leaves promptly at 11:00am
Bus departs Wrentham Outlet Mall at 3:00pm and 5:00pm

Use the QR code to reserve your spot!

YOUR VOICE IS A LETHAL WEAPON
DANNY GLOVER

MLK

Celebration Service Learning Inspiration
Celebration Service Learning Inspiration

2014 MLK Series
Monday
Danny Glover
Wed 12:30 PM - 1:15 Core & Student Center
Thursday
Shirley Chisholm
Wed 12:30 PM - 1:15 Core & Student Center

Open to all students and faculty. Please call the Office of International Student Engagement at 401-227-4957 for more information and details. Please call ResLife, ResLife@risd.edu, or call The Office of International Student Engagement at 401-227-4957.

IMMIGRATION LAWYER

Are you an international student who wants to learn more about your visa options after graduation?

If so, come and join The Office of International Student Services (OISS) and Immigration lawyer, **Eileen Morrison**, to learn about visa options after graduation and OPT (Optional Practical Training)!

When? April 30th, Wednesday 6:30-8pm

Where? Met Room B

Snacks will be provided

RISD OISS

RICHARD ROSS TUESDAY, MARCH 10TH
TWO DYNAMIC WORKSHOPS

SPECIAL WORKSHOP: ART & ACTIVISM
EWING HOUSE
TUESDAY, MARCH 10
12:30pm - 1:30pm

IN THE FACE OF INJUSTICE: HOW DO ARTISTS RESPOND?
TUESDAY, TAPROOM
EADING ROOM
8:30pm - 10:30pm

For more information, call Eileen at 401-227-4957 or visit The Office of International Student Engagement at 401-227-4957.

We're not ready for this.

RISD Vagina Monologues
Wednesday, April 29th, 8:00
RISD Auditorium

A collaboration between RISD + Sojourner House

With thanks to:
The National Endowment for the Arts, the Rhode Island State Office of the Secretary of the Arts, the Rhode Island State Office of the Secretary of the Arts, the Rhode Island State Office of the Secretary of the Arts.

RISD SIS
Ewing House
T, Thurs
Thompson House
Mon, Wed, Fri

Religious, spiritual Groups
contact ISE about
booking for services/ retreats

REFLECT ROOM

Open Daily
Ewing House
8am-10pm
with ID Access

Sign the
RISD
Notes Book

Prayer, Meditation, Reflection

Prayer Rugs, Meditation Cushions

Religious Library

Comfort Chairs available for use

Body-Mind - Peace - Spirit

FRIDAY, January 9th
Community Panel & Forum.
RISD Auditorium
6:30-9pm

SATURDAY, January 10th
Black Lives Matter: The Artists' Call.
Spoken Word & Performance Artists Against Police Violence
Artist led Workshop
12-3pm
Tap Room

FREE & OPEN to the public

FERGUSON: Past, Present, Future

Sponsored by RISD students & The Division of Student Affairs
For more info: 401-277-4957 / diverse@risd.edu

JALWA PRESENTS
MEANGIRLS
FEATURING HARMONIC MOTION

“WATCH YOUR BACK”

DATE: 14TH MARCH 2015
VENUE: RISD AUDITORIUM
TIME: 6:00PM

RISD/Brown SASA & BRIO bring to you,
HOLIT
The festival of color

Date: Sunday, May 3rd
Location: Lincoln Field (Brown/Main Green)
Time: 2 pm onwards

YouTubeing for Change

A diversity panel and lecture series hosted by BAAD, in collaboration with **RISD Feminists, ISE, CSI, Liberal Arts, & the Mapping Identities Initiative.**

RISD is proud to welcome three popular YouTubers to participate in “YouTubeing for Change?” Misha Higgins, Jenny Yang, and Jeanette Kishore address social issues relating to gender, sexuality, and orientation using their own YouTube channels. The panel will be moderated by ISE Director, Dr. Jennifer K. Brown, and will include a Q&A session to address issues of social justice. These presentations will be followed by an open discussion session on campus.

This event is free and open to all. There are no tickets. There are no donations that they can just about be having.

Jamie Kilstein

Jamie Kilstein is an American writer, radio host, and activist. He made his TV debut on the show “Kilstein’s Up” with Chris Hayes, Countdown with Keith Olbermann, Showtime, BBC America, and more. Kilstein has written for NPR, PBS, and other outlets. He is a stand-up comedian that discusses social issues. He is also a YouTuber. He has a weekly show on YouTube called “Male Privilege” where he discusses social issues. He has also appeared on “Totally Busted” on FX, “Showtime’s The Green Room,” and CNN’s “The Jay Bylar Show.”

Join us Wednesday, February 25th,
7-8:30 pm in the RISD Auditorium.

get your I-20 signed

The Met
Nov 19th, 6-9pm
15 West
Dec 2nd, 6-8pm
The Met
Dec 3rd, 6-9pm

prepare for your travel outside of the U.S. during thanksgiving/winter break

* Your I-20 can be signed at Carr House room 202
** Open 7 business days for process. Please plan accordingly!

IMMIGRATION & New International Student Social

Ewing House
Wednesday, 24 June 2015
6:30pm - 8:30pm

Mandatory session for all International Students
Come and mingle and enjoy some delicious food!

2015 Jewish Film Festival
FEBRUARY 19-22
jewishfilmfestival@brown.edu

All screenings are free and open to the public

Thursday 2/19, 2 pm
Sissonom 001
Everything is Illuminated

Saturday 2/21, 2 pm
Chace Center, Museum
RISD
Keeping the Faith

Sunday 2/22, 2 pm
Sissonom 001
Brown University
The Comedy of Vivaldi Campbell

Co-Sponsors
Brown RISD Jewish Engagement Partnership
Office of the Dean of the College at Brown
Mapping Identities Initiative at RISD Provost Office
Division of Liberal Arts at RISD

MARCH

OPT Lunch Workshop (8)
OPT Lunch Workshop (4)
OPT Lunch Workshop (1)
Richard Ross: Art & Activism Workshop (20)
Richard Ross: In the face of injustice how do we respond? (40)
RISD Jalwa presents "Mean Girls" (150)
OPT Lunch Workshop (4)
OPT Workshop (7)
OPT Lunch Workshop (15)
CPT Workshop (3)
Spring Retreat (5)
OPT Lunch Workshop (4)
OPT Lunch Workshop (12)

APRIL

OPT Lunch Workshop (9)
Accepted Students Day
RISDiversity Orientation (40)
RISDiversity Photo Day (40)
RISDiversity Photo Day (10)
OPT Lunch Workshop (1)
OPT Workshop (3)
CPT Workshop (3)
Accepted Students Day
OPT Lunch Workshop (2)
RISD LGBTQ & Ally Faculty & Staff Gathering (35)
"Glam!" RISD/Brown Drag Show (40)
OPT Lunch Workshop (1)
Vagina Monologues (100)
I Fell You (50)
Kabob, Curry & Chorale/Penn Masala (350)

MAY

Holi (200)
Student Staff End of Year Celebration (10)
Student Leadership Awards Dinner (200)
Commencement

JUNE

Summer Orientation

3473

Total Attendees

76

Total Programs

SERVICES + OUTREACH

Over the course of 2014-2015 the ISE team were represented at the following professional conferences:

Elia Baker Child Policy Training Institute Children's Defense Fund
Clinton, TN. June

Social Justice Training Institute: Creating a Culture Committed to Social Justice and Equity
Rhode Island School of Design. August

NAFSA Region X & XI Bi-Regional Conference,
Albany, NY. October

Women's Leadership Conference
University of Rhode Island, RI December

Social Justice Training Institute
California, January

Third Culture Kids (TCK) Conference
Clark University, Worcester, MA. February

RI Higher Education Training Consortium: Diversity and Inclusion Fundamentals
Rhode Island, February

NAFSA Academy for International Education Training
Atlanta, GA. March

Annual NAFSA Conference
Boston, MA. May

Social Justice Training Institute,
Massachusetts, June

Conference Calls and Other Professional Development:

Queering Faith: Students Experience of Race, Faith and Sexuality
Conference Call

Effectively Programming and Advisor on Power & Privilege
Conference Call

Supporting LGBTQ Survivors of Sexual Violence
Conference Call

Exploring Pathways Forward for LGBT2s
Conference Call

Interfaith, Diversity and Student Affairs
ACPA/Interfaith Youth Center Webinar

Interfaith Cooperation 101: Making it Happen on Campus
ACPA/Interfaith Youth Center Webinar

Health Matters Campus Program
Jed & Clinton Foundation Webinar

*Conference Calls were either offered through the Consortium of Higher Education LGBT Resource Professionals, or the SYPP Center (see Affiliations).

Memberships/Affiliations:

American College Personnel Association (ACPA)
ACPA New England Regional Newsletter, Editorial Board Member
Human Rights Campaign (HRC)
National Gay & Lesbian Task Force
Consortium of Higher Education LGBT Resource Professionals
RISD Staff Council, Executive Board Secretary
AIDS Project Rhode Island, Professional Test Counselor
Youth Pride Rhode Island
RI Health Department
Center for Strengthening Youth Prevention Paradigms (SYPP Center)
Children's Defense Fund

Committees Served On:

Alpern Scholarship Committee, Rhode Island Foundation
Campus Master Plan Steering Committee
Data Definitions Committee
Dean of Student Search Committee
Diversity Steering Committee
Ferguson Response Event Planning Committee
Global Classroom Working Group
International Orientation Programming Committee
Mapping Identities Advisory Group
MLK Planning Committee
NAFSA Region XI Chair Stream, NAFSA Region XI
Orientation Programming Committee
RISD Accreditation 2016, Standard 6 Workgroup
RISD Diversity Committee
RISD and Children's Defense Fund Partnership Committee
Strategic Partnerships Advisory Committee
Student Affairs Programming Committee
Student Conduct Board
Student Communication Committee
Students of Concern Committee
Student Leadership Dinner Committee
Student Success and Experience Committee

PROJECT THRIVE

Christopher R. Lauth, Assistant Director of Diversity Programs
Michael Cooley & Diego Fernandez, Programming Coordinators
Tony Johnson, Director of ISE

MISSION

To assist first-year and underrepresented students' transition to college and connect them to the RISD community in a meaningful way that allows them to have an overall positive and impactful RISD experience.

To provide engaging programs and tailored workshops that foster skill development for first-year students.

To provide support to first-year students who are first in their family to pursue an academically creative degree that identify as underrepresented and/or first-generation.

To illuminate and explore the many intersections of identity and to help students embrace and express their unique identity in positive and creative ways.

To provide RISD faculty, staff and alumni with an opportunity to guide students as they develop skills for success inside and outside of the classroom/studio and beyond their time at RISD.

To leverage the strength of community in establishing meaningful relationships between students, faculty, staff and alumni.

The following report outlines the implementation and assessment of the third year of the ISE Mentoring Program, officially named Project Thrive. The program began in the Fall of 2012 and continues to experience rapid growth and outstanding success. The program sought to impact the academic transition and cultural success of first-year, underrepresented students at RISD. This year, the program ended up serving a total of 21 students, supported by 23 staff, faculty and alumni mentors from across the institution. The Office of Intercultural Student Engagement is immensely grateful for the many colleagues that offered their time and expertise to serve as mentors to the program. This program would not be possible without them and much of the "magic" that transpires is a result of their commitment to the mentoring relationship.

One of the most significant improvements this year for Class III, was the introduction of Study Group model for our programming series. This new model provided a more streamlined approach to programming and provided participants with a consistent, bi-weekly programming structure that addressed a pre-determined set of skills/topics while providing intentional moments for community building and peer supported study/project time. The new model was highly successful. The only thing we are looking to do in altering this curriculum is to provide more "fun" in the sessions and to seek creative ways in which to do this. One of my favorite suggestions has been instead of having

dinner catered; perhaps have participants make their own pizza one night! This year also saw a marked improvement in our application and selection process with the implementation of the College Student Inventory (CSI). As part of their application process, registrants were required to complete a CSI which provide ISE staff with vital data from each student that allowed us to make informed decisions on who we would accept this year into the program.

Data from the program evaluations reveal that we had another magical year and those that participated in the program, largely found the experience to be worthy, important and transformative. We have some incredible people at RISD who serve as our mentors and I have witnessed first-hand some of the very best mentoring going on. ISE was able to see observable success this year in our students and we have the data to back that claim up, thanks to the pre and post CSI. We have an ambitious amount of recommendations for next year and are looking forward to Class IV!

PROJECT THRIVE Programming Series

September

Meet N' Greet w/ Jamie Washington

As part of an incentive and special privilege for mentees, we tried to obtain the mentees exclusive access with popular speakers that visit campus from time to time. This event provided a "backstage pass" to Jamie Washington and also served as the mentee orientation. (16 attended)

Opening Reception

This event served as the official start of Project Thrive for the new cohort of students. This year we had about 50 students, faculty, staff and Project Thrive alumni present to kick off the program. The evening featured a formal dinner and entertainment by performer Len Cabral. Additionally, Project Thrive alumni spoke to incoming students about their experiences in Project Thrive in past cohorts. The event took place at the beautiful Providence Biltmore Grand Ballroom. (38 attended)

Fall Outing: Waterfire!

The Project Thrive Programming Coordinators took mentees on a trip downtown to see a Providence tradition – a full lighting Waterfire. In addition, students got to enjoy some of their favorite street foods. (10 attended)

Skill Development: Crit Talk (RISD 360)*

Students learned more about the critique process at RISD and how to get the most out of it. (25 attended)

October

Study Group #1: Starting College

Students attended their first Study Group, this topic focused on starting college, learning how to navigate the campus and what to expect from their first semester classes and living in the freshman quad.
(14 attended)

Project Thrive Retreat

We took students to the RISD Farm in Tillinghast to provide a truly relaxing retreat space. Students learned more about RISD, identity development, and what they would like to see out of their Project Thrive mentoring community. Students also received and reviewed the results of the CSI report.
(3 attended)

Skill Development: Time Management (RISD 360)*

Students learned how to improve their time through information and exercises. (10 attended)

Study Group #2: Cultural Adjustment

Student learned about how some aspects of their identity may present themselves as obstacles to full engagement with RISD's campus.
(8 attended)

Skill Development: Budgeting & Financial Aid (RISD 360)*

Students learned about financial aid from the Director of Financial AID at RISD, along with various institutional scholarships that are available. Little if anything was discussed about how to budget.
(12 attended)

Skill Development: Class Registration Party (RISD 360)*

Students learned how to select courses for winter session registration using web advisor.
(12 attended)

November

Social Pressure & Work/Life Balance

Students identified social pressures that they receive on campus at RISD and ways to deal with those in a healthy manner along with maintaining a good work/life balance.
(14 attended)

Professional Etiquette

Students learned the basics of professional etiquette which included: different levels of professional dress, email etiquette, the art of networking, banquet dining and the art of small talk.
(7 attended)

December

Study Group #5: Finals Preparation

Students took time to learn how to adequately prepare for finals and manage time to effectively finish final projects. It also helped students generally manage end of the semester stress and going home for the holidays.
(2 attended)

January

Study Group #6: Making the Most out of Winter Session

Mentees enjoyed a guest presentation by Andy Jacques, Assistant Director of Leadership Programs to learn about all that RISD has to offer in regards to co-curricular activities, student club/organizations, and community service.
(14 attended)

Ice Skating*

Mentees and mentors were invited for a night of ice skating and hot chocolate at the Bank Of America rink downtown.
(19 attended)

MLK Celebration Series 2015*

Mentees were strongly encouraged to attend all of the festivities that were a part of the MLK celebration series; a large number of our mentees attended the opening reception which featured a community dinner and gospel performance.
(15 mentees attended opening)

February

Closing Celebration

This program marked the formal end to our program and a celebration of the mentees' successful completion of their first year at RISD. All faculty staff, students and alumni, had a good time. The program featured crepes made to order, a letter writing activity, clay sculpturing and an activity called "Community Web" that allowed people to share one thing they most appreciated that someone else in the program did for them
(20 attended)

MARTIN LUTHER KING SERIES 2015

Each year in January, the RISD community organizes and hosts the Martin Luther King, Jr. Series to acknowledge the life and vast contributions of Dr. King in creating a more just and democratic society. The annual series of special events includes lectures, programs and workshops designed to provide RISD and the local community with meaningful moments of service, reflection, self-development, inspiration and celebration.

This year our series included:

Opening Ceremony

Fleet Library

Hosted in the RISD Fleet Library, our opening night is a night of celebration and joy. The nights' focus is the heavenly music of the Prism of Praise Community Gospel Choir; this year we also included two RISD spoken word artists.

Day of Service

MLK Jr. Elementary School, 35 Camp Street

On Martin Luther King, Jr. Day RISD and the Mt. Hope Learning Center partnered for a special Day of Service event. The day included running arts and crafts workshops for children, engaging them with games, activities, and conversation. This event is always very popular and this year we welcomed over 200 children to take part in arts and crafts, facilitated by RISD students, staff, and faculty.

RISD LEADS - Martin, Ella, and Cesar: Learning from Movement Leadership

The Tap Room, 226 Benefit Street

Featuring: Camilo Viveiros, Community Organizing Trainer and Movement Strategist

Camilo Viveiros, a longtime community organizer and trainer, shared different leadership styles, highlighting examples from movement leaders including Martin Luther King Jr, Ella Baker and Cesar Chavez.

Participants had the opportunity to reflect on what they can learn from various forms of leadership including servant leadership, feminist leadership, and interdependent leadership. They also explored ways organizers have gotten others involved to make movements, and how to build community participation in art or design projects, through community based arts and participatory action research processes.

Rhythm & Change - A Danny Glover Film Series

Metcalf Auditorium, Chase Center, 20 North Main St

In anticipation of the 2015 Keynote Speaker, Mr Danny Glover, we curated a selection of films produced by Danny Glover. Over three days we explored the intersections of social change, the Arts, and reflection. The selected films, *The Black Power Mixtape 1967-1975*, *Trouble the Water*, and *Soundtrack for a Revolution*, exemplify how African-American music has always been grounded in social change and showcase Danny Glover's finesse as a filmmaker/producer. The film series was closed with a panel discussion featuring liberal arts faculty members, Patricia Barbeito and Jonathan Highfield. The discussion and films themselves served as entry points into Glover's work, the social-political and historical contexts of music, and discussions on the role that arts play in social change.

Kindred Exhibition - Lunch with Danny Glover, and the artists of the Kindred Show

Gelman Gallery

During his visit, our Keynote Mr Danny Glover joined the curators, (Kelly Walters MFA Graphic Design '15) and Tia Blassingame (MFA Printmaking '15) and contributors of the Kindred Show for a special lunch conversation, hosted in the Gelman Gallery. The Kindred show presented a selection of art and design work from artists who identify as being of African descent. The exhibition served as a vehicle through which the contributors can develop a kinship with each other and provide the support and critical dialogue needed to advance their work. Kindred celebrates the intersections where all members of the RISD community converge as this is a 'kindred' space. Glover spoke to the group about his journey as an artist and being an advocate of social justice and positive change.

Keynote Address - Danny Glover, Social Change in the Arts

RISD Auditorium

Our keynote and honoree was actor and social activist, Danny Glover. He addressed the RISD and local community on the the responsibility of artists not merely as creators, but as citizens of the world. In a wide-ranging, poetic address, he referenced not just King, but James Baldwin, Langston Hughes, John Steinbeck, *Sitting Bull*, Shakespeare, Harry Belafonte, Pablo Picasso, Angela Davis, Clifford Odets and more.

Glover was selected to deliver the Martin Luther King Jr. keynote address because his long history of political involvement exemplifies the role of the creative arts in advancing democracy and social justice. Despite the weather delays with the Northeast snowstorm, Glover's lecture was a full house, spilling over the auditorium capacity into the Chase Center where the whole event was simulcasted. This year we also live-streamed to our Alumni community.

It is the mission of the MLK Planning Committee each year to select a keynote speaker that will pay homage to the work of Dr. King and be an example of the values he lived by. As always, we want to enrich the student experience here at RISD, not only through providing educational programming during the MLK Series but long after our guests have physically left the campus. On the next page you'll see just one example of how we have remained connected to one of our former honorees.

CHILDREN'S DEFENSE FUND

The Children's Defense Fund's Leave No Child Behind® mission is to ensure every child a Healthy Start, a Head Start, a Fair Start, a Safe Start and a Moral Start in life and successful passage to adulthood with the help of caring families and communities. CDF provides a strong, effective and independent voice for all the children of America who cannot vote, lobby or speak for themselves. We pay particular attention to the needs of poor children, children of color and those with disabilities. CDF educates the nation about the needs of children and encourages preventive investments before they get sick, drop out of school, get into trouble or suffer family breakdown.

Marian Wright Edelman was honored on campus as RISD's 2014 Rev. Martin Luther King, Jr. Keynote Speaker and Honoree. During her lecture remarks and personal conversations, she challenged RISD's community of artists to connect with the importance of focusing on children and youth. Additionally, she invited RISD to partner with the Children's Defense Fund in maximizing the visual arts within their portfolio of youth programs.

Almost immediately after Mrs. Edelman's RISD lecture and invitation, RISD and CDF began conversations that would bring RISD insights, expertise, and talent to install the Maria Nhambu Collection in two CDF locations. The Maria Nhambu Collection consists of pan-African art, artifacts, and textiles donated to CDF. Acquired over 40 years, the collection reflects Nhambu's passionate commitment to showcasing the artistry, talent, and creative genius of Africa. A native Tanzanian, Maria Nhambu (Nhambu is Sukuma and translates as "one who connects" or "bridge person") donated the collection to inspire, educate, and empower viewers to experience the spirit and beauty of African through the creativity of its people.

Managed through the Office of Intercultural Student Engagement, the project has only been possible through the talent and volunteerism of RISD alumni, faculty, students, and staff. These individuals partnered with this initiative believing that the missions of both organizations could be best served through their efforts to bring the best of art and design approaches to the Children's Defense Fund. We salute the following individuals:

Tony Johnson
Project Principal

Rene Payne '83, GD
Principal - FAVOR Design & Communications

Monique Johnson '92, PT
Educator & Curator

Francesca Scott '82, PH
Photographer & Educator

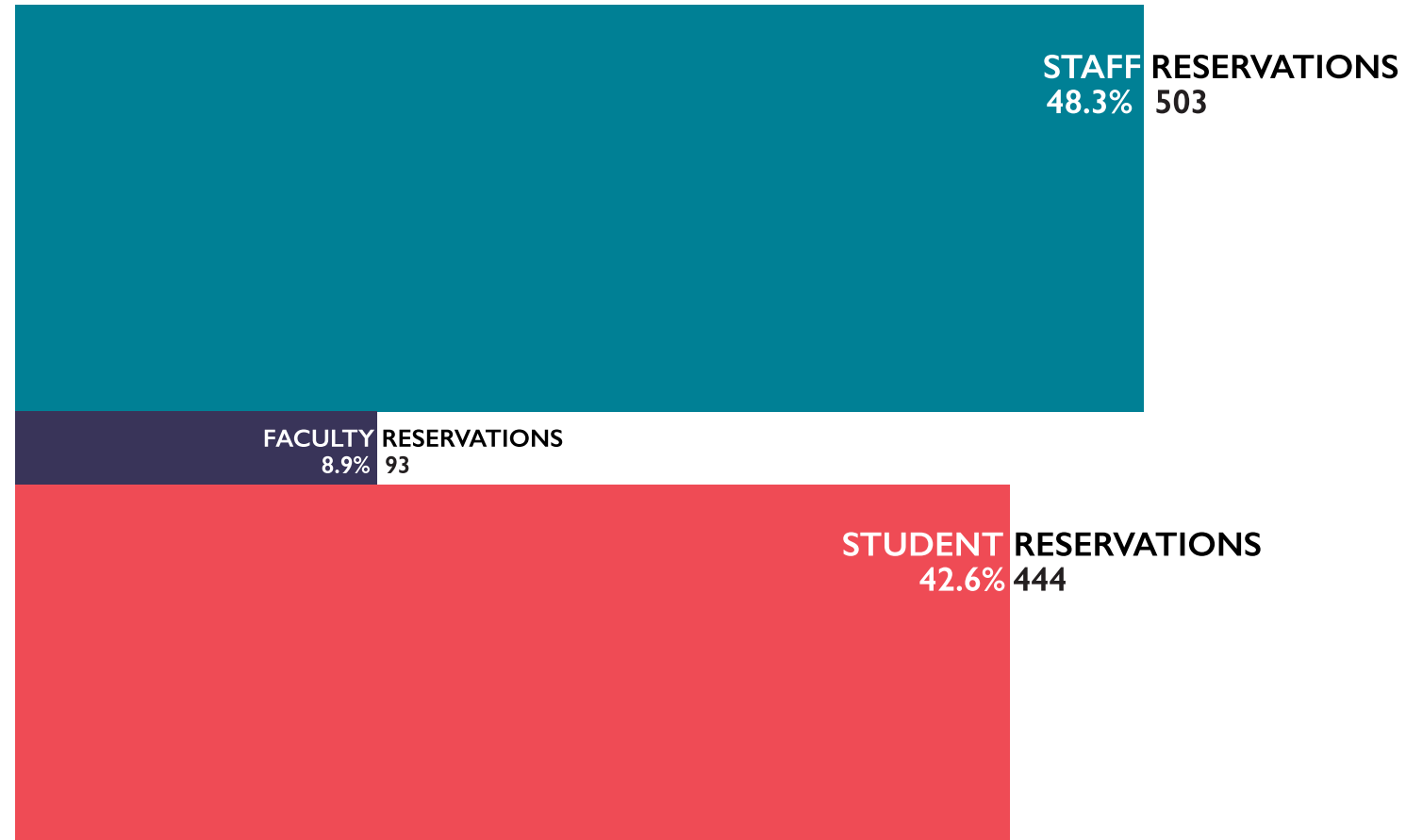
Bolaji Campbell
Professor - History of Visual Arts & Culture

Lisa "Nafis" White '15, SC
2014 MLK Project Intern

Garcia Sinclair '15, SC
2014 MLK Project Intern

Yannik Stevens '17, SC
2015 MLK Project Intern

EWING MULTICULTURAL CENTER



ISE oversees and manages the Main Lounge, Club Room and Reflection Room in the Ewing Multicultural Center located at 41 Waterman Street. Ewing is a small little yellow house tucked away by a lush landscape overlooking Frazier Terrace and Benefit Street. While the Center is ISE's main programming space, the Main Lounge and Club Room are available for the campus community to reserve, including campus departments, and student organizations.

All reservations are managed online and processed and approved by ISE's front office. In 2014 - 2015 the Lounge and Club room were reserved for a total of 349 programs, equalling a grand total of 1040 hours.

Ewing is open to the RISD community daily from 6am - 10pm. The lounge, although small is a very flexible space and this year we've seen a full range of programs from student club meetings, to orientation training sessions, to sit-down dinners celebrating the year past.

The Reflection Room is also a space that receives a lot of visitors, this space is open to our community daily and everyone is invited to enjoy the serene space for prayer, meditation, and personal reflection. We have outfitted the space with comfy, prayer rugs, and meditation cushions in hopes of creating a space to be enjoyed by all.

FACTS



The RISD Office of Intercultural Student Engagement Annual Report 2014-2015

CONTENT

Emma Montague, Anthony Johnson, Kate Sacco, Chris Lauth, & Barb Kluesner

CONTENT LAYOUT

Emma Montague

REPORT DESIGN

Yannik Stevens '17 SC

For more information, please contact

Rhode Island School of Design
Intercultural Student Engagement
2 College Street
Providence, RI 02903

401-277-4957 • ise@risd.edu

All photos in this publications are provided courtesy of the Office of Intercultural Student Engagement and Office of International Student Services.